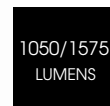
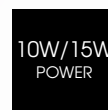


# VEX BULKHEAD

VEX-10/15-300NW/QE

QVIS®

LIGHTING & SECURITY



Q-DRIVE

Driver Manufacturer

EPISTAR

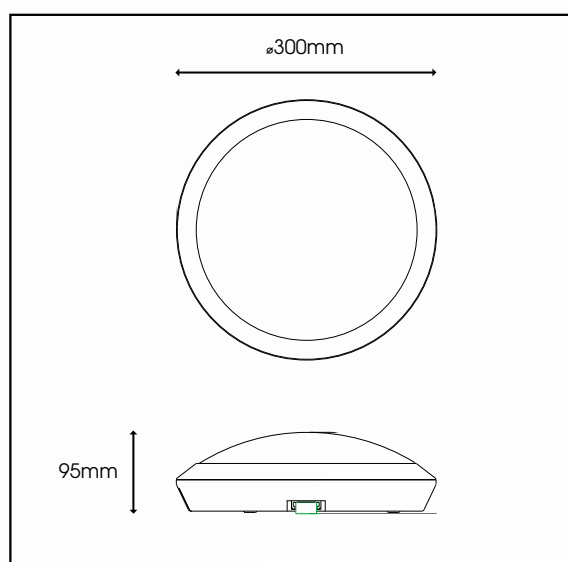
LED's inside

| Specification               | VEX  |
|-----------------------------|--|
| System Power                | 10W/15W (Emergency 3W)   |
| Driver Manufacturer         | Q-Drive  |
| LED Chipset                 | Epistar  |
| Colour Rendering Index      | >80  |
| Lumen Output                | 1050Lm/1575Lm (Emergency 315Lm)  |
| LED Efficacy                | 105 Lm/cW  |
| Dimmable                    | Dali / Switch-Dim / 1-10V  |
| IK Rating                   | IK10   |
| IP Rating                   | IP66   |
| Power Factor                | 0.997  |
| Fire Rating                 | TP(a)  |
| Housing & Diffuser Material | Polycarbonate  |
| Beam Spread                 | 120 °  |
| Colour Temperature          | 4000K  |
| Operating Temperature       | -20 to 30 °C   |
| Weight                      | 0.6kg  |
| Dimensions                  | ø300mm x 95mm  |
| MacAdam Step                | <3   |
| Lifetime                    | 50,000 hours, L70-B10 (Ta 25 °C)   |
| Emergency Output            | 3 Hours (3W)*  |
| CE Standards                | EN60598-1, EN62493, EN55015, EN61547, EN61000-3-2, EN61000-3-3, EN62722-1, EN62722-2-1 and EN50581 |
| CE Directives               | LVD, EMC, ERP & RoHS   |

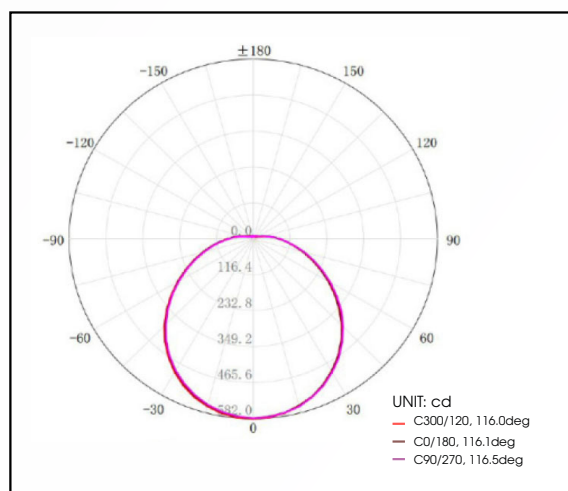
\* Warranty terms and conditions apply

\*For emergency products with a rated service life of < 50,000 operating hours, QVIS offers a 5-year warranty period on the luminaire and 1-year warranty period on the battery pack

## TECHNICAL DRAWINGS



## LUMINOUS INTENSITY DISTRIBUTION DIAGRAM



SWITCH DIM



1-10V

For further information on our products or terms and conditions visit our website  
www.qvisled.com or email: sales@qvislighting.com

SURFACE & SUSPENDED RANGE