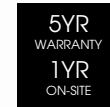


# LYNX RECESSED MODULAR (12x3)

LYNX-SLG-30-12X3WW/E

**QVIS®**

LIGHTING & SECURITY

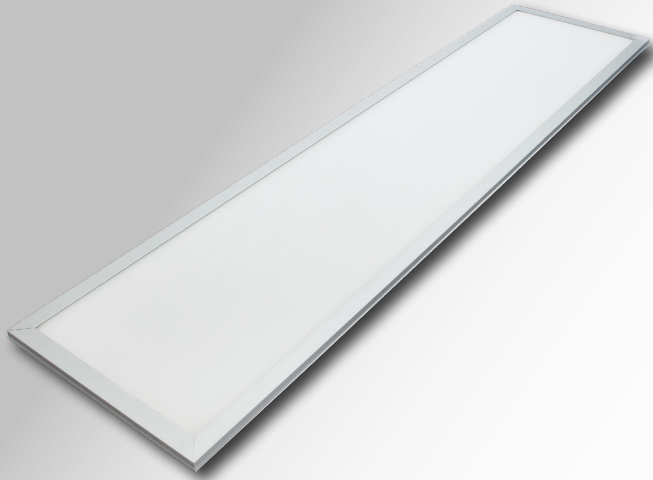


**OSRAM**

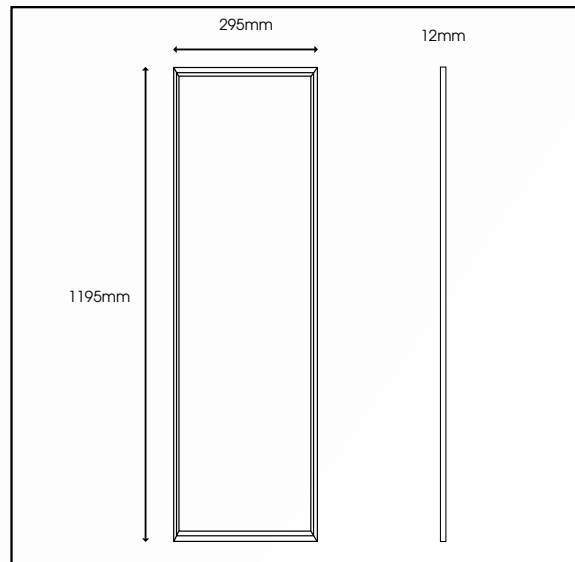
Driver as Standard

**SAMSUNG**

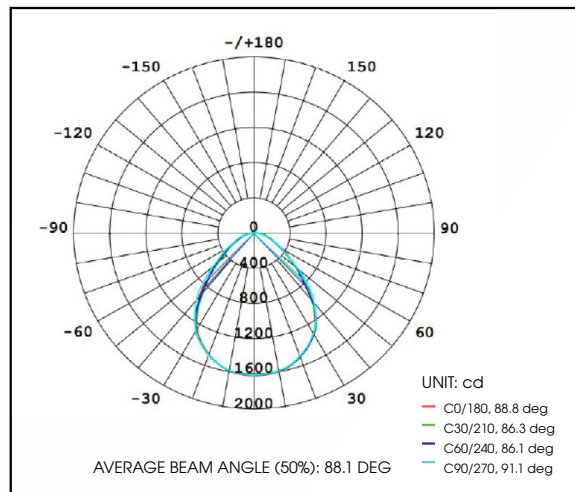
LED's inside



## TECHNICAL DRAWINGS



## LUMINOUS INTENSITY DISTRIBUTION DIAGRAM



Specification	Lynx SLG 12x3
System Power	30W (Emergency 3W)
Driver Manufacturer	Osram
LED Chipset	Samsung
Diffuser	Microprism
Colour Rendering Index	>85
Typical UGR	<17
LED Efficacy	120 Lm/cW
Lumen Output	3600Lm (Emergency 360Lm)
Fire Rating	TP(a)
Dimmable	On request
Power Factor	0.95
IP Rating	IP44
Beam Spread	160 °
Colour Type	Single
Colour Temperature	3000K
Housing Material	High Grade 6063 Aluminium
Light Guide Plate	PMMA
Operating Temperature	-20 to 50 °C
Input Voltage	AC 200-240V, 47-63Hz
Weight	2.8kg
Dimensions	1195mm x 295mm x 12mm
MacAdam Step	<3
Lifetime	50,000 hours, L70-B10 (Ta 25 °C)
Emergency Output	3 Hours (3W)*
CE Standards	EN60598-1, EN 60598 2-2, EN62493, EN55015, EN61547, EN61000-3-2, EN61000-3-3, EN62722-1, EN62722-2-1 and EN50581
CE Directives	LVD, EMC, ERP & RoHS

\* Warranty terms and conditions apply

\*For emergency products with a rated service life of < 50,000 operating hours, QVIS offers a 5-year warranty period on the luminaire and 1-year warranty period on the battery pack

For further information on our products or terms and conditions visit our website  
www.qvisled.com or email: sales@qvislighting.com

MODULAR & RECESSED RANGE