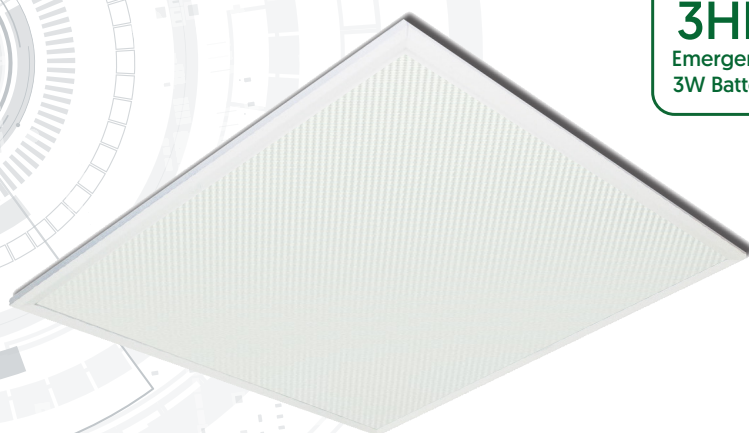


Lynx Modular Panel (5x5)

Modular & Recessed Range

CODE: LYNX-SLG-25-5X5WW/TE

QVIS[®]
LED LIGHTING



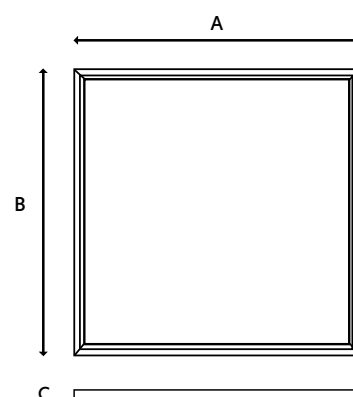
3HR
Emergency
3W Battery



Specification	Lynx
System Power	25W [Emergency 3W]
Driver Manufacturer	Tridonic
LED Chipset	Samsung
Colour Rendering Index	>85
Typical UGR	<17
Lumen Output	3000Lm [Emergency 360Lm]
LED Efficacy	120 Lm/cW
Power Factor	0.95
IP Rating	IP44 from Below
Diffuser	Microprism
Dimmable	DALI / Switch-Dim / Corridor / DSI
Beam Spread	160°
Colour Temperature	3000K
Housing Material	High Grade 6063 Aluminium Frame
Light Guide Plate	PMMA
Operating Temperature	-20 to +65 °C
Input Voltage	AC200-240V, 47-63Hz
Dimensions	495mm x 495mm x 10.5mm
Weight	2.4kg
MacAdam Step	<3
Lifetime	50,000 hours, L70-B10 [Ta 25 °C]
Emergency Output	3 Hours [3W]
CE Standards	EN60598-1, EN 60598 2-2, EN62493, EN55015, EN61547, EN61000-3-2, EN61000-3-3, EN62722-1, EN62722-2-1 and EN50581
CE Directives	LVD, EMC, ERP & RoHS

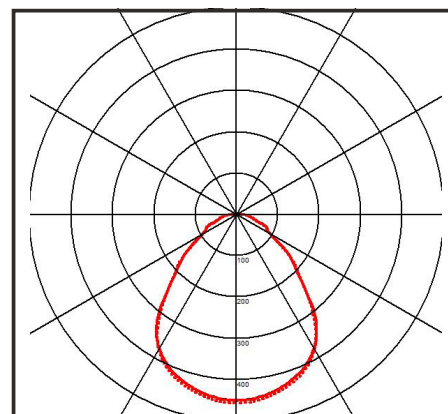
* Warranty terms and conditions apply

TECHNICAL DRAWINGS



A = 495mm C = 10.5mm
B = 495mm

LUMINOUS INTENSITY DISTRIBUTION



Information is subject to change and can be withdrawn without notice

For further information on our products or terms and conditions visit our website www.qvis.co.uk/lighting or email: sales@qvislighting.com