

## Surface & Suspended



IP20 Ingress Protection



IK106 Impact Resistance

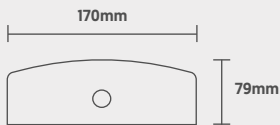


Steel Housing

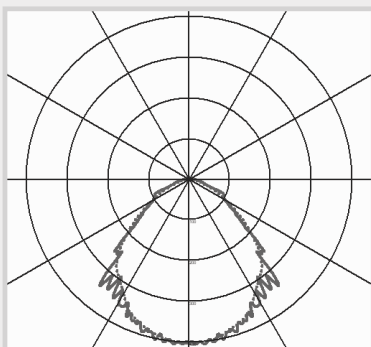


Conduit Side Entry

### Dimensions



### Photometric Data



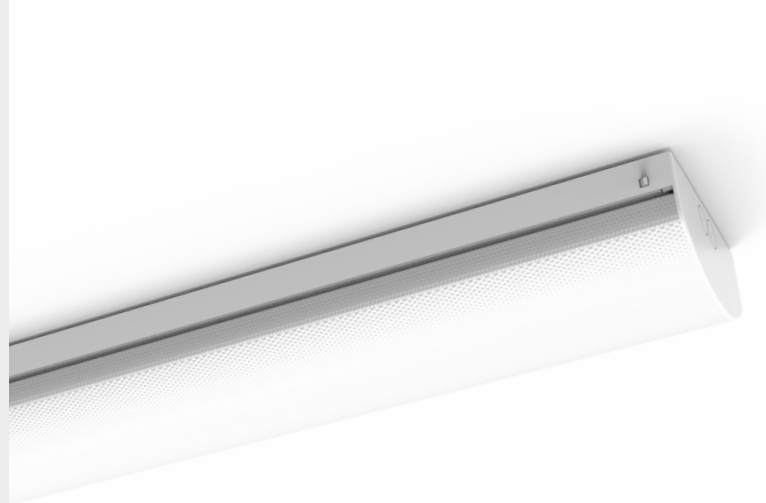
# EduPac

## Commercial Batten

CODE: EDUPAC-PROUGR-WS-1200TC/EM

# QVIS<sup>®</sup>

LIGHTING & SECURITY



Power	Efficacy	Output	Kelvin
19W [Emergency 3W]	160Lm/W	3040Lm [Emergency 480Lm]	<b>Tri-Colour:</b> 3000K, 4000K or 5000K
22W [Emergency 3W]	160Lm/W	3520Lm [Emergency 480Lm]	
26W [Emergency 3W]	160Lm/W	4160Lm [Emergency 480Lm]	
30W [Emergency 3W]	160Lm/W	4800Lm [Emergency 480Lm]	

### Technical

Input Voltage	AC 220-240V
Colour Rendering Index	>80
Beam Spread	120°
Power Factor	<0.90
Dimable	On Request
Operating Temp.	-20 to +45°C
Housing Material	Steel
IP Rating	IP20
IK Rating	IK06
Weight	2.4kg
Dimensions	1200 x 170 x 79mm
MacAdam Step	<6
Lifetime	50,000 Hours
CE Standards	EN60598-1, EN62493, EN55015, EN61547, EN61000-3-2, EN61000-3-3, EN62722-1, EN62722-2-1 and EN50581
CE Directives	LVD, EMC, ERP & RoHS
UGR	<17