

Surface & Suspended



IP20 Ingress Protection



IK106 Impact Resistance

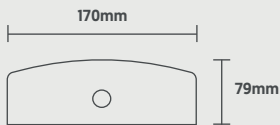


Steel Housing

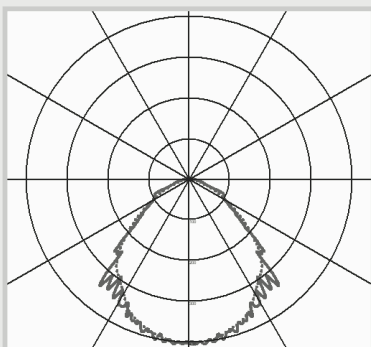


Conduit Side Entry

Dimensions



Photometric Data



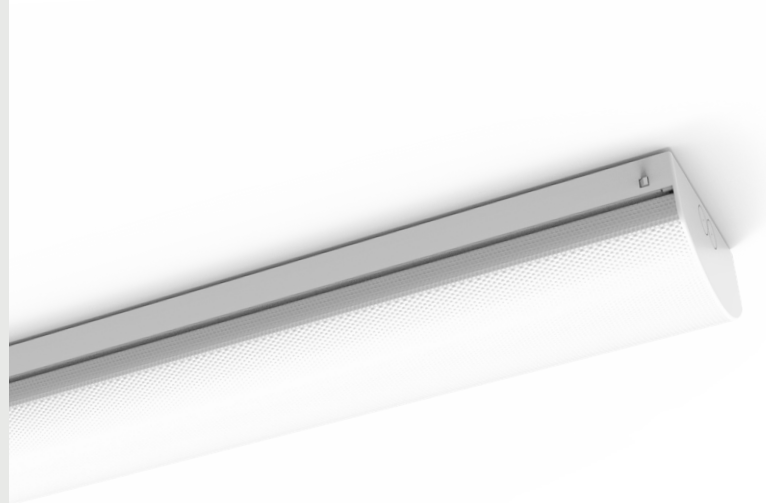
EduPac

Commercial Batten

CODE: EDUPAC-PROUGR-WS-1200TC

QVIS[®]

LIGHTING & SECURITY



Power	Efficacy	Output	Kelvin
19W	160Lm/W	3040Lm	Tri-Colour: 3000K, 4000K or 5000K
22W	160Lm/W	3520Lm	
26W	160Lm/W	4160Lm	
30W	160Lm/W	4800Lm	

Technical

Input Voltage	AC 220-240V
Colour Rendering Index	>80
Beam Spread	120°
Power Factor	<0.90
Dimable	On Request
Operating Temp.	-20 to +45°C
Housing Material	Steel
IP Rating	IP20
IK Rating	IK06
Weight	2.4kg
Dimensions	1200 x 170 x 79mm
MacAdam Step	<6
Lifetime	50,000 Hours
CE Standards	EN60598-1, EN62493, EN55015, EN61547, EN61000-3-2, EN61000-3-3, EN62722-1, EN62722-2-1 and EN50581
CE Directives	LVD, EMC, ERP & RoHS
UGR	<17