

Surface & Suspended



IP20 Ingress Protection



IK106 Impact Resistance

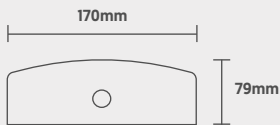


Steel Housing

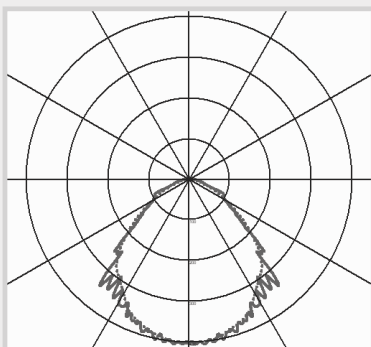


Conduit Side Entry

Dimensions



Photometric Data



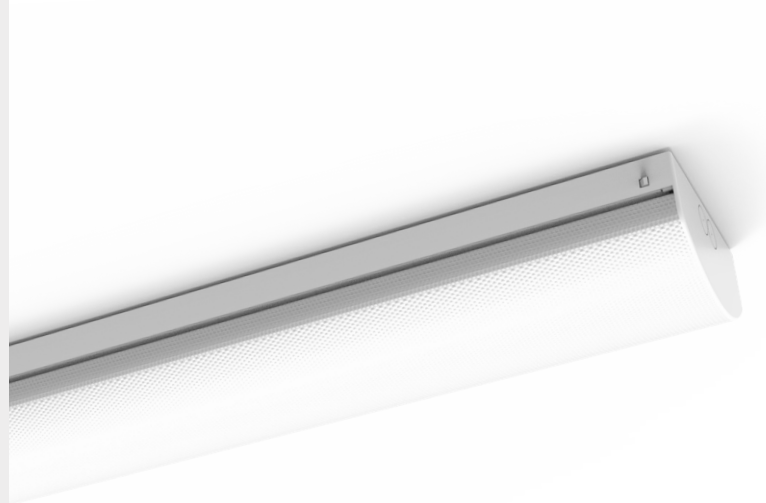
EduPac

Commercial Batten

CODE: EDUPAC-PROUGR-WS-1500TC/EM

QVIS[®]

LIGHTING & SECURITY



Power	Efficacy	Output	Kelvin
25W [Emergency 2W]	160Lm/W	4000Lm [Emergency 320Lm]	Tri-Colour: 3000K, 4000K or 5000K
30W [Emergency 2W]	160Lm/W	4800Lm [Emergency 320Lm]	
35W [Emergency 2W]	160Lm/W	5600Lm [Emergency 320Lm]	
40W [Emergency 2W]	160Lm/W	6400Lm [Emergency 320Lm]	

Technical

Input Voltage	AC 220-240V
Colour Rendering Index	>80
Beam Spread	120°
Power Factor	<0.90
Dimable	On Request
Operating Temp.	-20 to +45°C
Housing Material	Steel
IP Rating	IP20
IK Rating	IK06
Weight	3.2kg
Dimensions	1500 x 170 x 79mm
MacAdam Step	<6
Lifetime	50,000 Hours
CE Standards	EN60598-1, EN62493, EN55015, EN61547, EN61000-3-2, EN61000-3-3, EN62722-1, EN62722-2-1 and EN50581
CE Directives	LVD, EMC, ERP & RoHS
UGR	<17